



QUILT MUSEUM  
AND GALLERY

## Quilt Museum And Gallery Newsletter

Issue 1 November 2009

### Note from the Museum Director

Welcome to the first edition of the Quilt Museum and Gallery Newsletter. We hope you will find it interesting and informative, and please do share it with your friends and family.

Since opening in June last year we have welcomed over 16,000 visitors to the Museum, and put on nine exhibitions of quilts and textile arts. Our education and volunteer programmes, supported by the Heritage Lottery Fund, have been very successful and we have delivered a wide range of learning activities for all ages and volunteer opportunities for adults. We are grateful for the continuing support from visitors, volunteers and the members and friends of The Quilters' Guild who raised £10,000 during the summer through the Little Gems tombola.



Our current exhibitions 'Seeing Red: The Influence of Turkey Red Dye on Quiltmaking' and 'On the Edge in York' by edge Textile Artists Scotland will both run until 23 December 2009.

Fiona Diaper

The Quilt Museum and Gallery is now an Accredited Museum with the Museums, Libraries and Archives Council. Thank you to everyone who worked to achieve this milestone!

This award demonstrates that the Museum has achieved clearly defined national standards relating to governance and management, user services, visitor facilities and collections management.

A C C R E D I T E D  
M U S E U M



MUSEUMS LIBRARIES ARCHIVES  
COUNCIL

### Education News

It's a new school year at the Quilt Museum and Gallery and we're planning many more learning workshops and talks, including some brand new courses ranging from '**Quilting Around the World**' to '**Sewing with your Children**'. Keep an eye on our website for details or call 01904 613242 for more information. You can also get in touch with our Education Officer on [education@quiltmuseum.org.uk](mailto:education@quiltmuseum.org.uk)

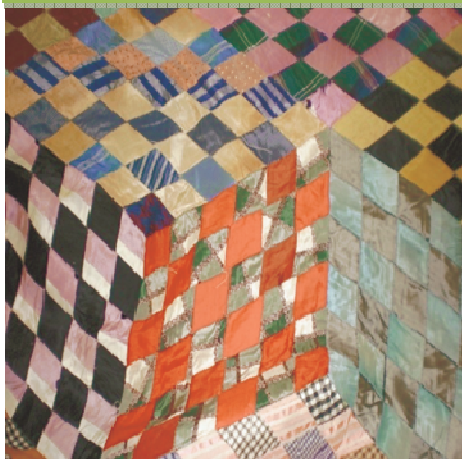
**Teachers' Open Day – Saturday 31 October -** You still have time to book places on our Teachers' Open Day on Saturday 31 October. Come for a free look at our exhibitions, find out about our workshops for schools and plan your visit with our Education Officer.

### Community Quilters

Don't forget that our regular quilt and patchwork group, 'Community Quilters', meets on the last Tuesday of the month, 1 pm -3.00pm. Bring a project to work on or learn a new patchwork technique with support from a friendly volunteer expert!



## Acquisitions



The Museum has been fortunate to have been offered a number of quilts in different styles and dates through the generosity of the public. One which was accepted in September is this silk diamond patchwork piece. The

stunning arrangement of brightly coloured silk diamonds into star shape patterns is visually very effective.

Although this quilt requires some basic conservation to damaged silk areas, the Collections Committee agreed that it would look striking on display. The patchwork dates from the Victorian period when the use of new artificially dyed silks was very popular. At present little is known about the piece, although the donors are trying to find out any family-related information to add to the Museum files. Other recent acquisitions accepted earlier this year include a contemporary patchwork mini-skirt, a 1920s Irish green and white cotton quilt, and a contemporary piece by New Horizons Textile Group entitled 'Daphne's Show and Tell', made in the style of Beryl Cook.

### New Online Shop! [www.quiltmuseumshop.org.uk](http://www.quiltmuseumshop.org.uk)

The Quilt Museum and Gallery is proud to present our new ONLINE SHOP, full of gifts, books, souvenirs and kits, all from our shop here in York. To celebrate we're offering a 5% discount on your first order! Come on in and have a browse!



'Daphne's Show and Tell'

## Volunteers

### Become a Fan of the Quilt Museum on Facebook!

Keep up to date on current exhibitions and events on the Quilt Museum's Facebook Fan Page! We already have over 100 Facebook fans, so join the social network by logging onto [www.facebook.com](http://www.facebook.com)



### Volunteers Sew Replica Turkey Red Quilts

Thank you to our Museum volunteers who lent their time and talents to researching, planning, and constructing replica Turkey Red quilts for our handling collection!

### Harrogate Knitting and Stitching Show

Thursday 19 to Sunday 22 November - 10 am - 5.30. Support the Quilt Museum by visiting our stand at the Harrogate International Centre! Visit [www.twistedthread.com](http://www.twistedthread.com) for more details.

### Volunteers help with Japanese Sashiko Exhibition

Museum volunteers Jennifer Mitchell and Sylvia Hogarth represented the Quilt Museum by assisting with a new exhibition of Japanese Sashiko textiles. The exhibition runs at York Art Gallery from 10 October 2009 – 24 January 2010. For more information visit [www.yorkartgallery.org.uk](http://www.yorkartgallery.org.uk).

**Museum will be shut 24 December 2009 to 8 January 2010**



Quilt Museum and Gallery, St Anthony's Hall, Peasholme Green, York YO1 7PW

Tel: 01904613242 [www.quiltmuseum.org.uk](http://www.quiltmuseum.org.uk)

Open Tuesday - Saturday 10 am-4.00 pm

The Quilt Museum and Gallery is an independent museum operated by The Quilters' Guild of the British Isles. Registered Charity no. 1067361.

Company limited by Guarantee no. 3447631